

## Green Owl Farmacy

5719 Morganton Road  
Greenback, TN 37742  
derek@greenowlfarmacy.com  
(808) 271-2661  
Lic. #

## Sample: 03TRC009019.O1235

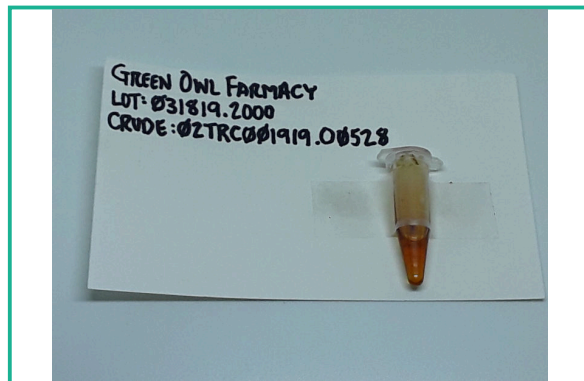
Strain: 031819.2000

Sample Received: 03/20/2019; Report Created: 03/22/2019

Leaf Inventory/Lot ID: ; Leaf Pre-Transfer Inventory/Lot ID:  
Leaf Batch ID: ; Leaf Pre-Transfer Batch ID:  
Leaf Manifest ID:

## 031819.2000

Other, Industrial Hemp  
External Batch ID: 02TRC001919.O0528



**2.20**  
**mg/g**

THC Potency

**79.37**  
**mg/g**

CBD Potency

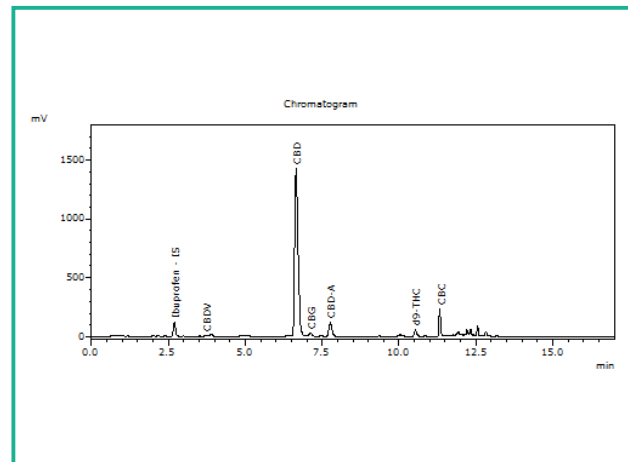
**81.57**  
**mg/g**

Total Potency\*

## Cannabinoids

Analyte	Mass mg/g	Mass %
THCa	ND	ND
Δ9-THC	2.20	0.220
CBD	77.00	7.700
CBDa	2.70	0.270
CBN	ND	ND
Δ8-THC	ND	ND
THCV	ND	ND
CBDV	0.37	0.037
CBG	1.20	0.120
CBGa	ND	ND
CBC	2.20	0.220
<b>Total</b>	<b>85.67</b>	<b>8.567</b>

## Chromatogram



THC Potency = THCa \* 0.877 + Δ9-THC; CBD Potency = CBDa \* 0.877 + CBD; LOQ = Limit of Quantitation; Total Potency\* = Total THC + Total CBD. Unless otherwise stated all quality control samples performed within specifications established by the Laboratory.

908 N. Howard St., Suite 101  
Spokane, WA  
(509) 284-7522  
<http://traceanalytics.com/>  
Lic# 0014

*Sara Minier*  
Sara Minier  
Senior Scientist

Confident Cannabis  
All Rights Reserved  
support@confidentcannabis.com  
(866) 506-5866  
[www.confidentcannabis.com](http://www.confidentcannabis.com)



This product has been tested by Trace Analytics, Inc using valid testing methodologies and a quality system as required by state law. Values reported relate only to the product tested. Trace Analytics, Inc makes no claims as to the efficacy, safety or other risks associated with any detected or non-detected levels of any compounds reported herein. This Certificate shall not be reproduced except in full, without the written approval of Trace Analytics, Inc. Lic# 0014 - Foreign Matter (Visual Inspection) - Moisture (Moisture Analyzer) - Water Activity (Water Activity Meter) - Microbiological (3M Petrifilm/qPCR) - Potency (HPLC-UV) - Residual Solvents (GCMS) - Mycotoxins (ELISA)